

MY HOME GRAVA PROJECT



Nagareddaya S

**General Manager-Corporate QA&QC
My Home Constructions Pvt Ltd
Hyderabad**

"Make Living Better"

Table of contents

- **About Group Company & Company**
- **Vision & Policy**
- **Department in the Organization**
- **Project selected for the award**
- **About team members who were involved**
- **Project Layout**
- **Project Details**
- **Project Highlights**
- **Project Views**
- **Precast Yard Zone**
- **Production of Elements**
- **Precast Elements Production**
- **QC Process Flow & QC Checks**
- **Stock Yard**
- **Elements Dispatch**
- **Precast Erection & Installation**
- **Awards**
- **MHCPL brief video**

Vision

"Our vision is to continue to develop solutions that make "living better" be it through Construction of "World Class" Living and Working Spaces or illuminating households through generation of power or manufacturing products like quality cement to build dream homes or enriching lives through imparting quality education"



Dr. J Rameswar Rao
Chairman My Home Group

IMS Policy



IMS (QUALITY, ENVIRONMENT, HEALTH & SAFETY) POLICY

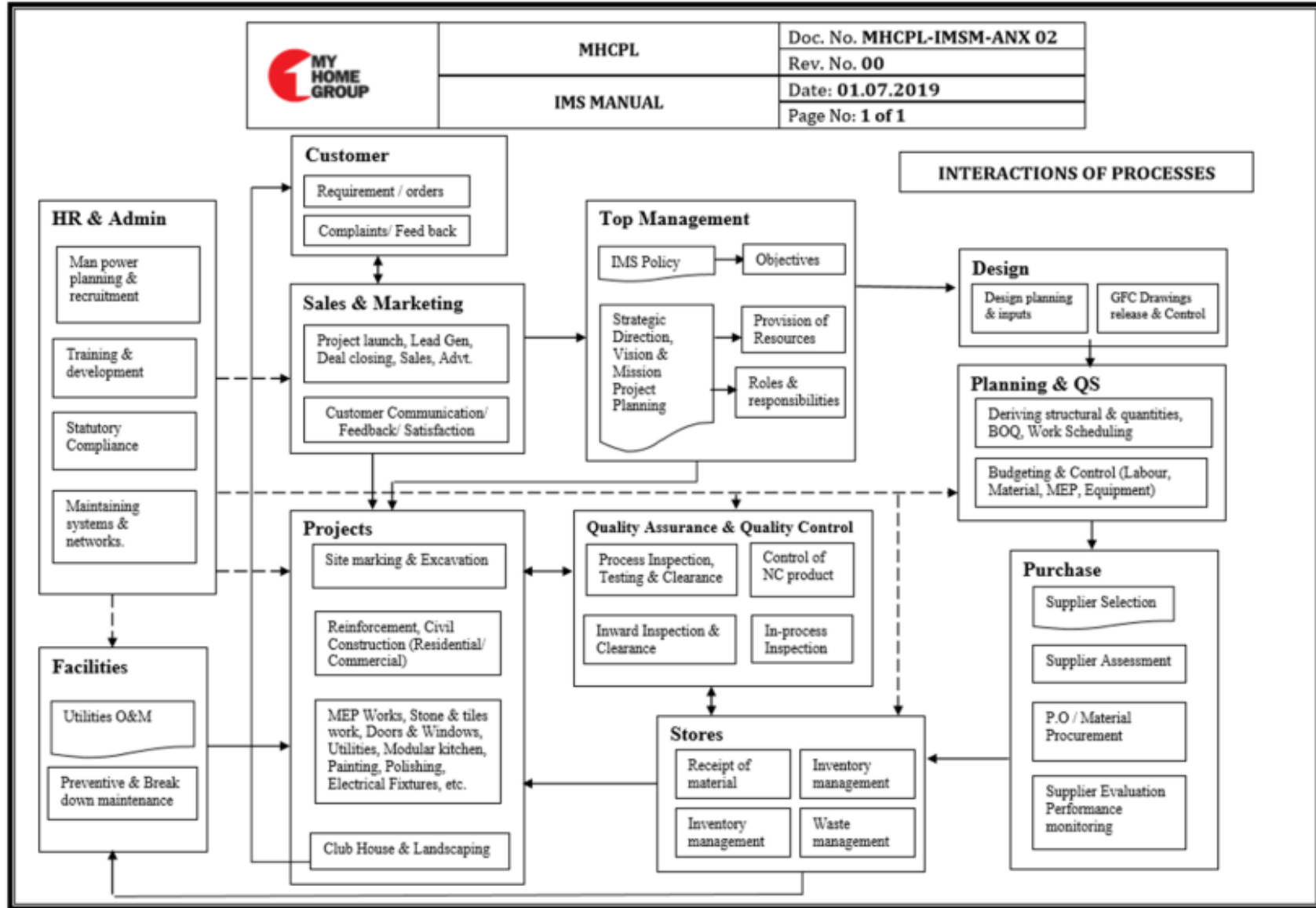
"We are committed to enhance the customer satisfaction by delivering living /commercial space on time, meeting the agreed specifications, complying environmental requirements, creating safe and secure work environment and enriching the life of work force and community.

We are committed to:

- ⌚ Plan, design, operate and maintain infrastructure, process and systems to secure sustainable environment, quality, health and safety aspects.
- ⌚ Protect the environment in all aspects of our business and in particular to significant aspects of our operations, to prevent pollution and adverse environmental impacts,
- ⌚ Provide a positive safety culture by safeguarding employees, workers, their representatives from injury & ill health through their consultation and participation in safety assessment and adherence to PPE.
- ⌚ Adopt and promote industry best practices to avert untoward incidents and respond to accidents and emergencies,
- ⌚ Continuously strive to enhance customer satisfaction,
- ⌚ Complying with all legal & applicable requirements,
- ⌚ Eliminating hazards, reducing risks and exploring opportunities by continual improvement of all processes to enhance the IMS performance, professional development and knowledge sharing.
- ⌚ Inculcate the culture of "SAFETY, ENVIRONMENT & QUALITY IS EVERYBODY'S RESPONSIBILITY".


MANAGING DIRECTOR

Department in the organization



About team members who were involved

Sl. No	Teams Involved in The Project
1	MHCPL Corporate
2	MHCPL Project Team
3	Consultants (Structural / Architectural / MEP & F and Others)
4	3 rd Party Quality Assurance and Quality Control Team (SPACE)
5	Precast Production Team
6	Contractors for Cast – in Situ
7	Precast Erection Team
8	Services Team
9	Contractors for Landscaping works and other external developments

Our Mission – "ZERO DEFECTS (ZeD) & ZERO LEAKS (ZeL)"

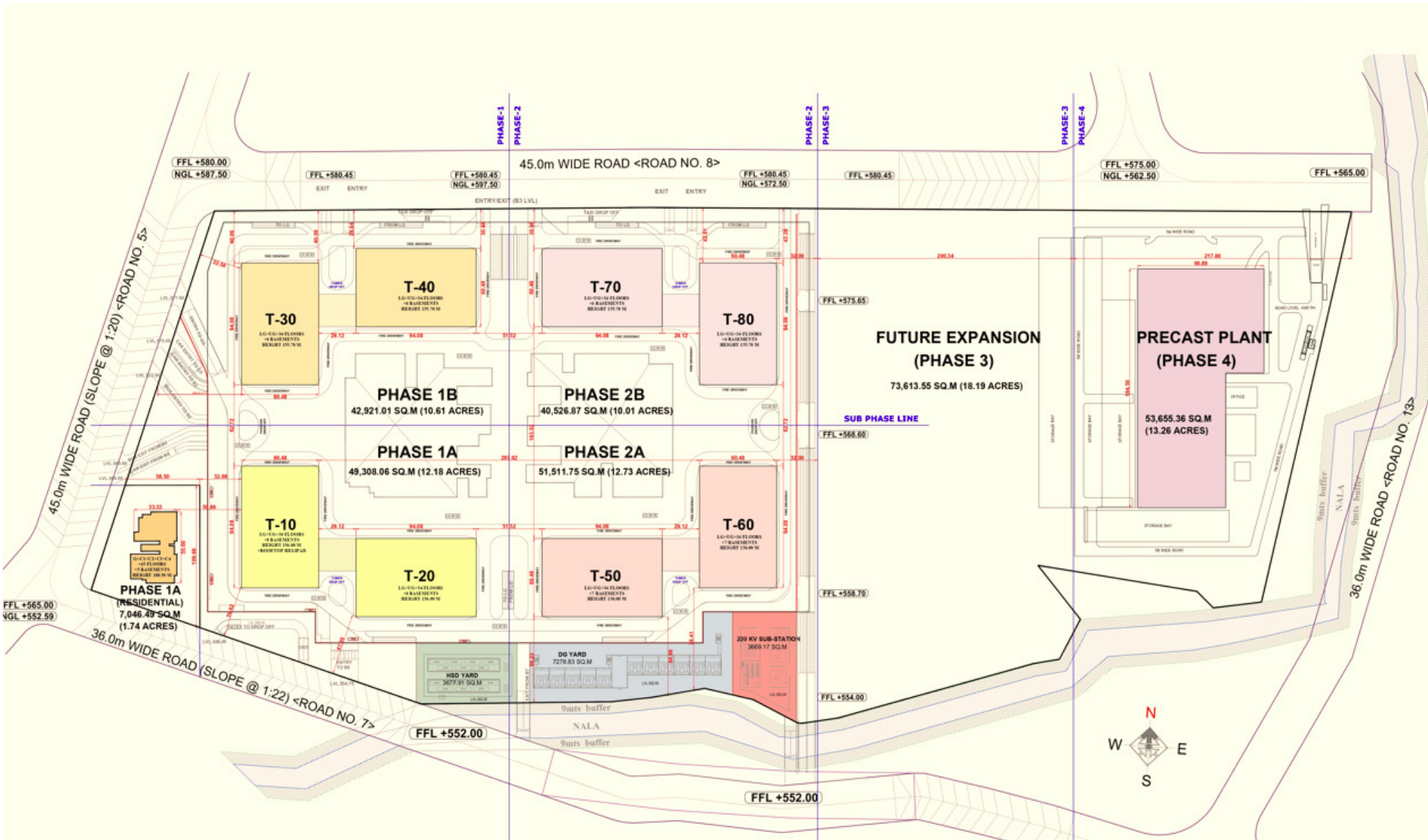
In order to sustain and enhance the confidence levels of all Stake holders (CASE- Customers, Associates, Society, Employees), MHCPL has focused on the following key factors contributing to achieve the end product quality



Both Quality Assurance and Quality Control systems are adopted to measure and continually improve the performance of above listed 5M's and achieve this mission and establish excellency in Bench Marking.

"Make Living Better"

Project Layout



"Make Living Better"

Project Highlights

- ❑ My Home Grava will be the tallest commercial precast building in India.**
- ❑ Total Super Built-up area including all phases is about 26.5 Million Square feet.**
- ❑ Approximately 80,000 precast elements shall be installed in each phase (2 Towers & non tower area)**
- ❑ Tower cranes – lifting capacity of 50 tons with tip load of 12.5 tons at 70 mts job.**
- ❑ The podium area will be equivalent to the individual tower area.**
- ❑ Targeted for LEED Platinum and IGBC Platinum Building ratings.**
- ❑ Project to be implemented in the BIM framework.**
- ❑ Precast plant with a production capacity of 5 million Sq.feet/Year.**

Project Views



Non Tower Landscape Zone



External Lounge Area



Out Side Corner View



Another Landscape zone



Reception Zone

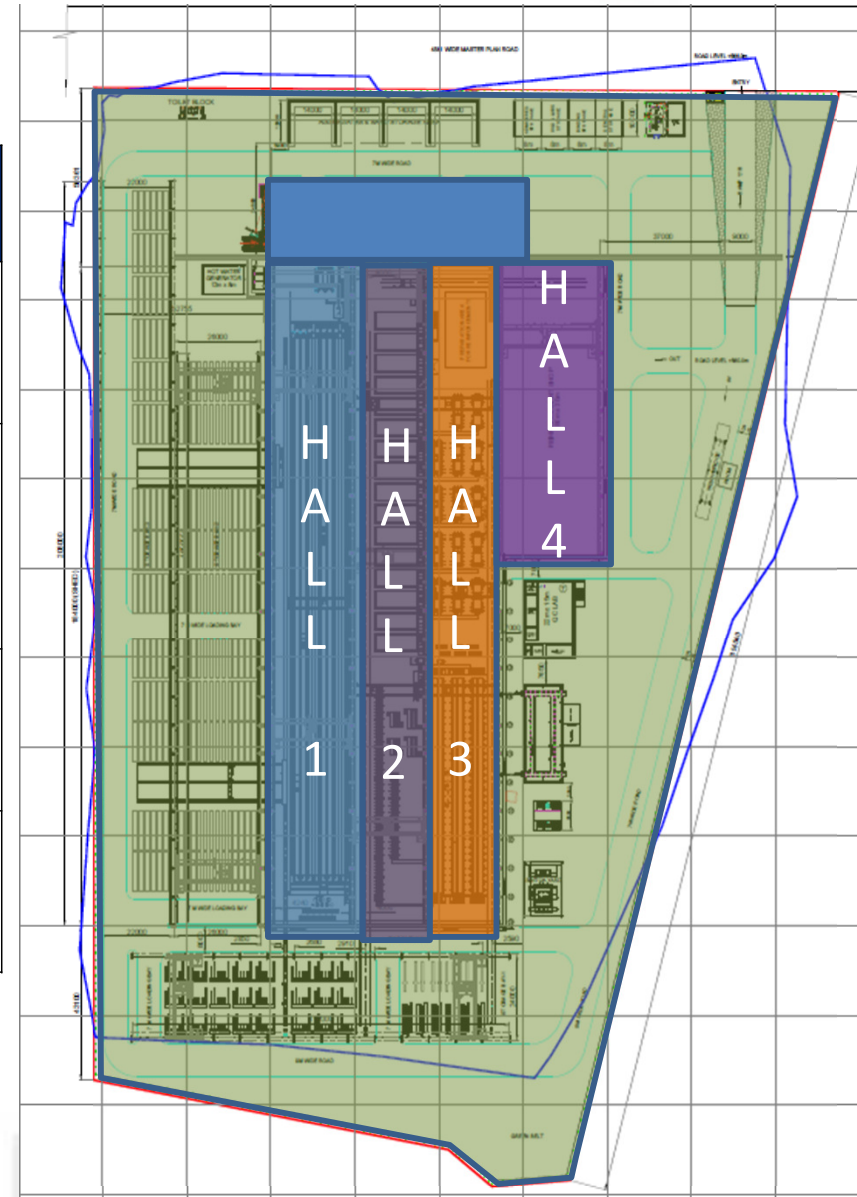






Precast Yard Zone

Sl.No.	Hall	Details
1	Hall 1	Hollow core slab beds - 8 No * 150m each
2	Hall 2	Hydraulic tilting tables – 16 Nos – 12m *4.5 m Non Prestressed Beam Lines - 84 m length Staircase mould - 4 Nos
3	Hall 3	Double Prestressed Beam Lines - 3 No*60m each Column Lines - 14 No's * 9 m each
4	Hall 4	Reinforcement yard - cutting, bending and fixing of rebar



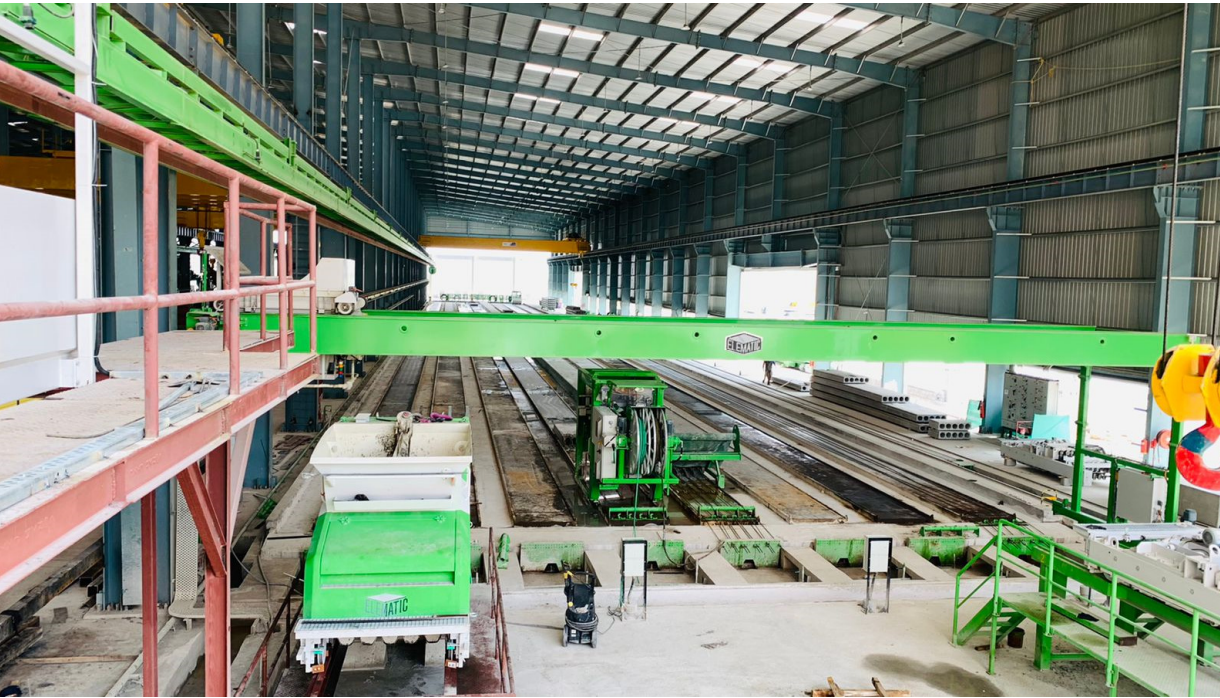


Out Side View



RMC Plant – CP90

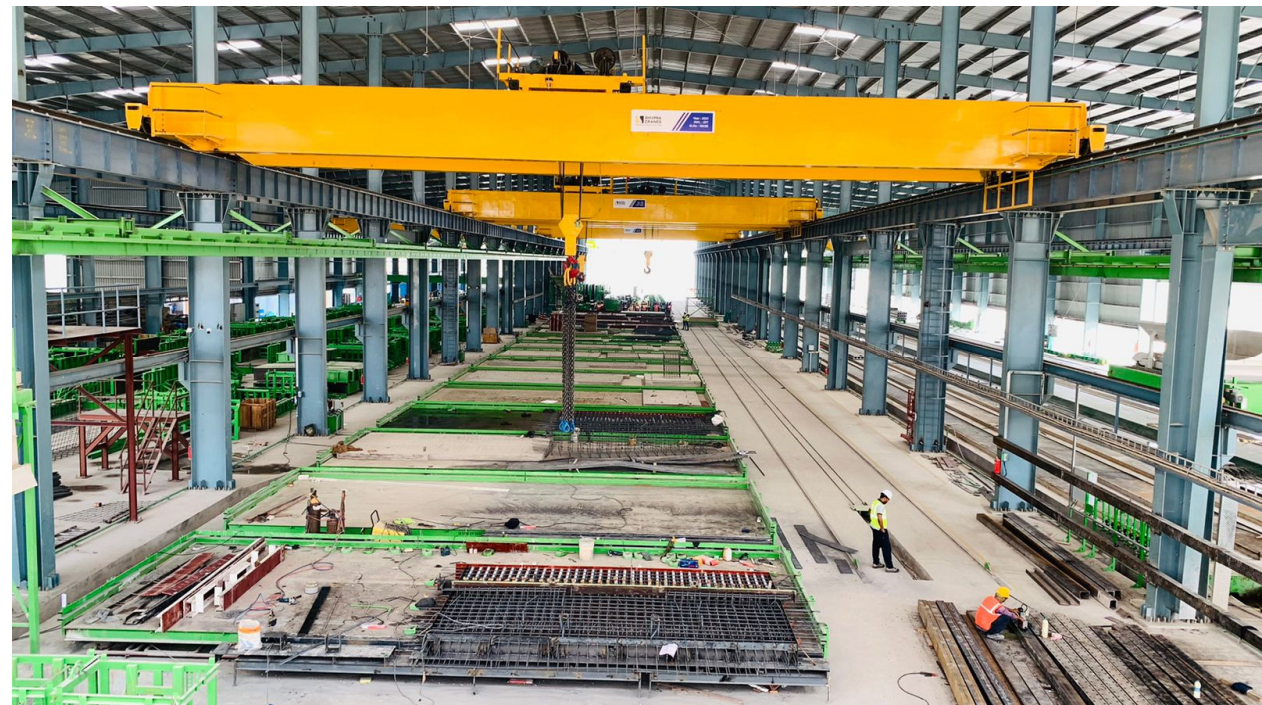


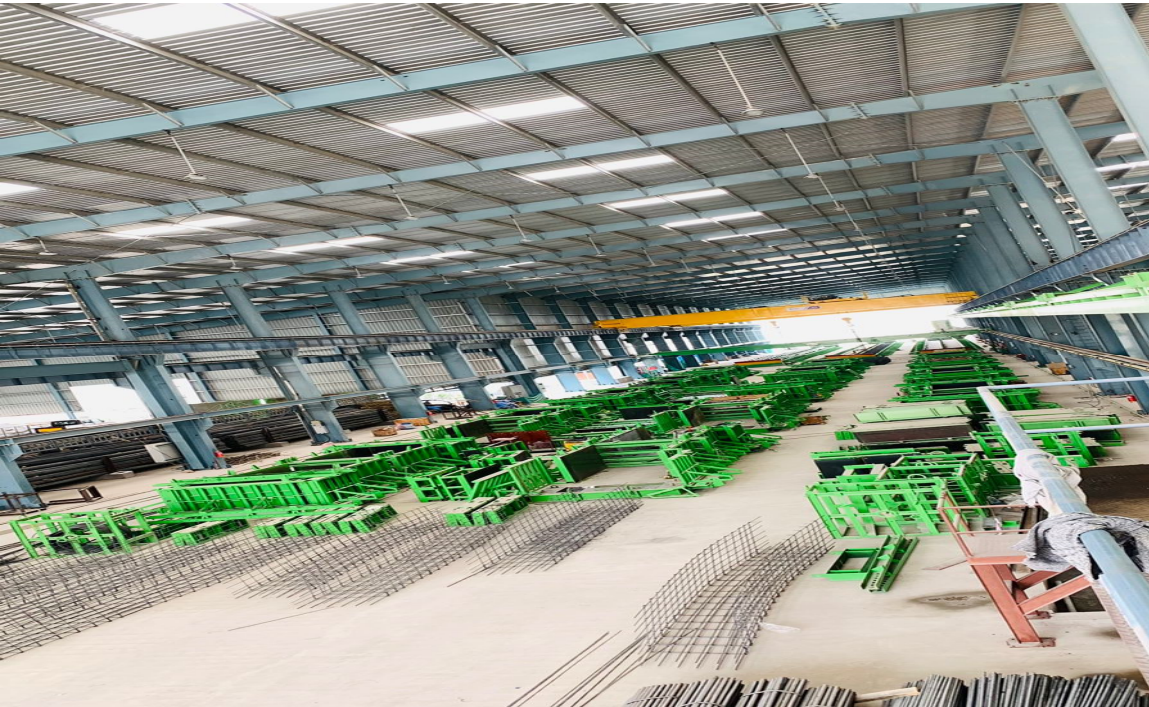


Hall -1
Hollow core slab beds



Hall -2
Non Prestressed Beam Lane





Hall -3
Double Prestressed Beam Lines



Hall -4
Reinforcement yard



Stock Yard



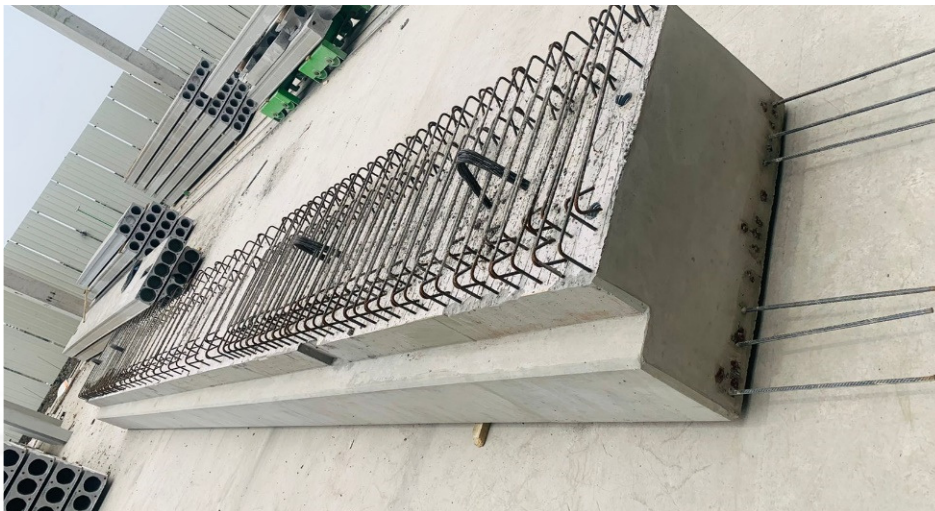
Production of Elements



Hollow core Slabs – M50



Non-Prestressed Beam – M40



Pre Stressed Beam – M60



Column – M80



Stair Case – M40



Steps with Mid Landing



Hollow Core Slab Production



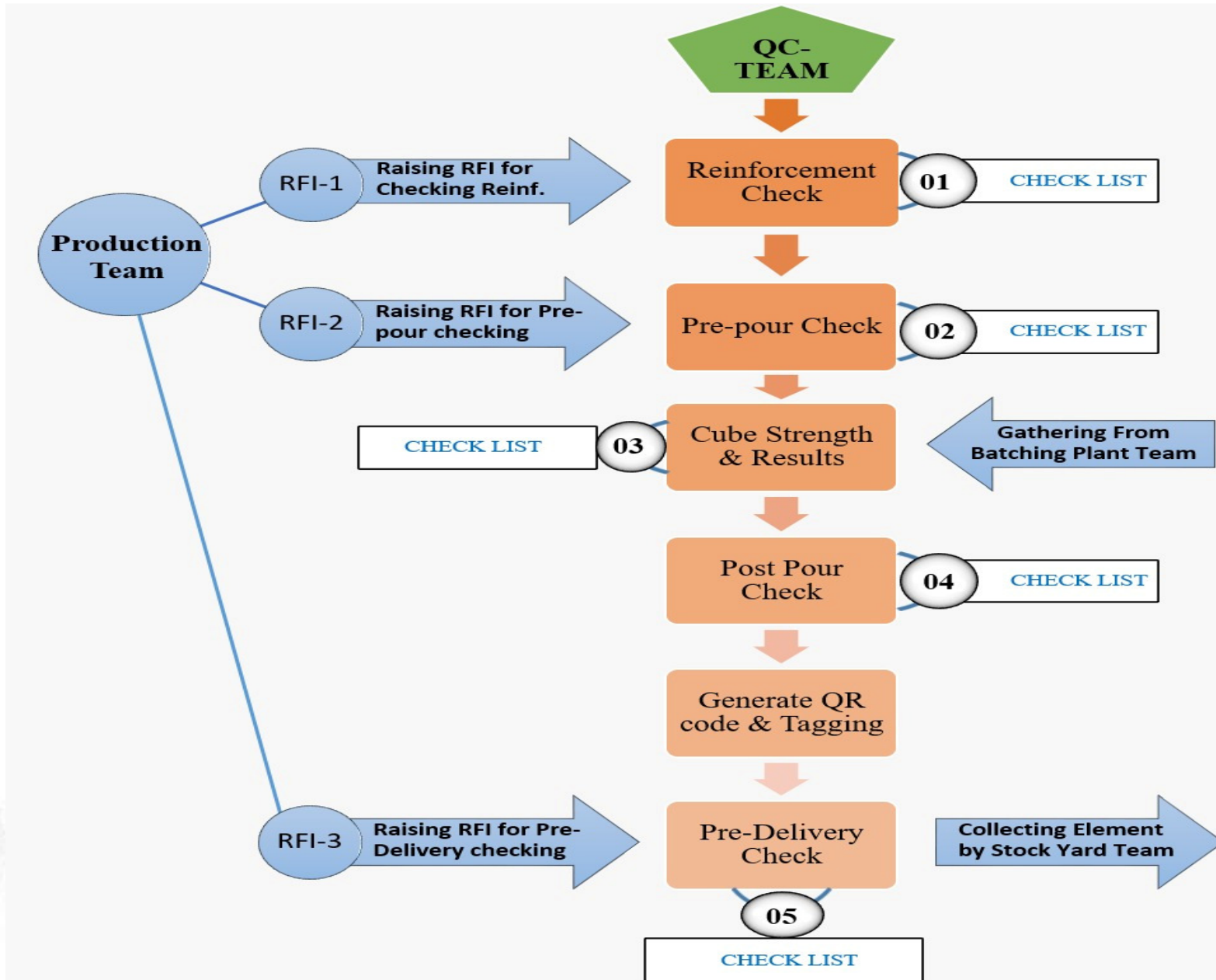
Column and Beam Production

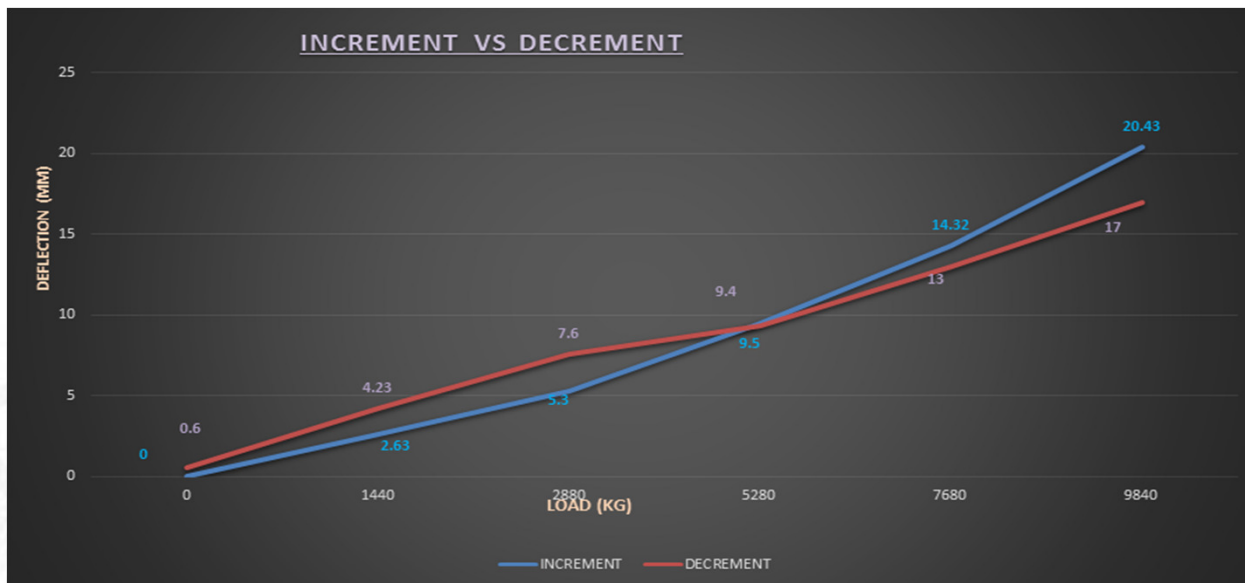


Production of Walls, Solid Slabs & Staircases



Precast Elements Production – QC Process Flow





Quality Checks (HCS -Load Test)

Stock at Yard



Elements Dispatch to Site



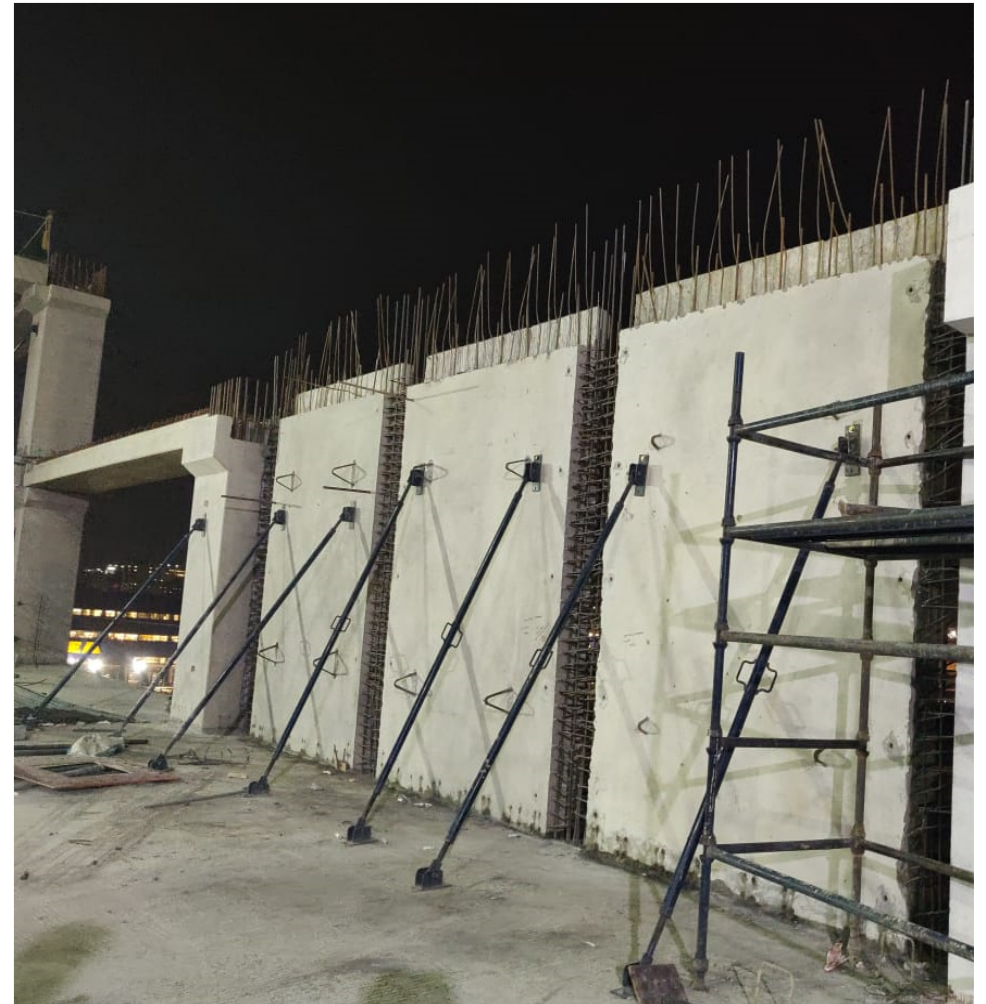
Precast Erection & Installation



Column Erection



Wall Erection



Beam Erection



POCO
SHOT ON POCO F1



Hollow Core Slabs Erection



Packing & Grouting – Manual & Mechanical



"Make Living Better"

Unloading & Lifting of Elements



Elements Erection



"Make Living Better"

Elements Erection



"Make Living Better"

Awards



CREDAI Create Award 2021



Excellent in Project Delivery-Avatar



ECBC Certificate



Most trusted Developer in South India



CREDAI Create Award 2017



Most Integrated Marketing Campaign



"Make Living Better"





Thank you !!

MY HOME CONSTRUCTIONS

**"Better Awareness Enables
Better Choice;
Better Choice Yields
Better Results"**